

MicheleCrawford

SERVICE + LEADERSHIP + DESIGN

Portfolio 2013



**Led planning efforts for KaBOOM!
playground build in Reid Park**



**Attended AmeriCorps Build
a-Thon in Dallas and Seattle**



**Led volunteers through the construction
of 8 new homes in the greater Charlotte,
NC Area**



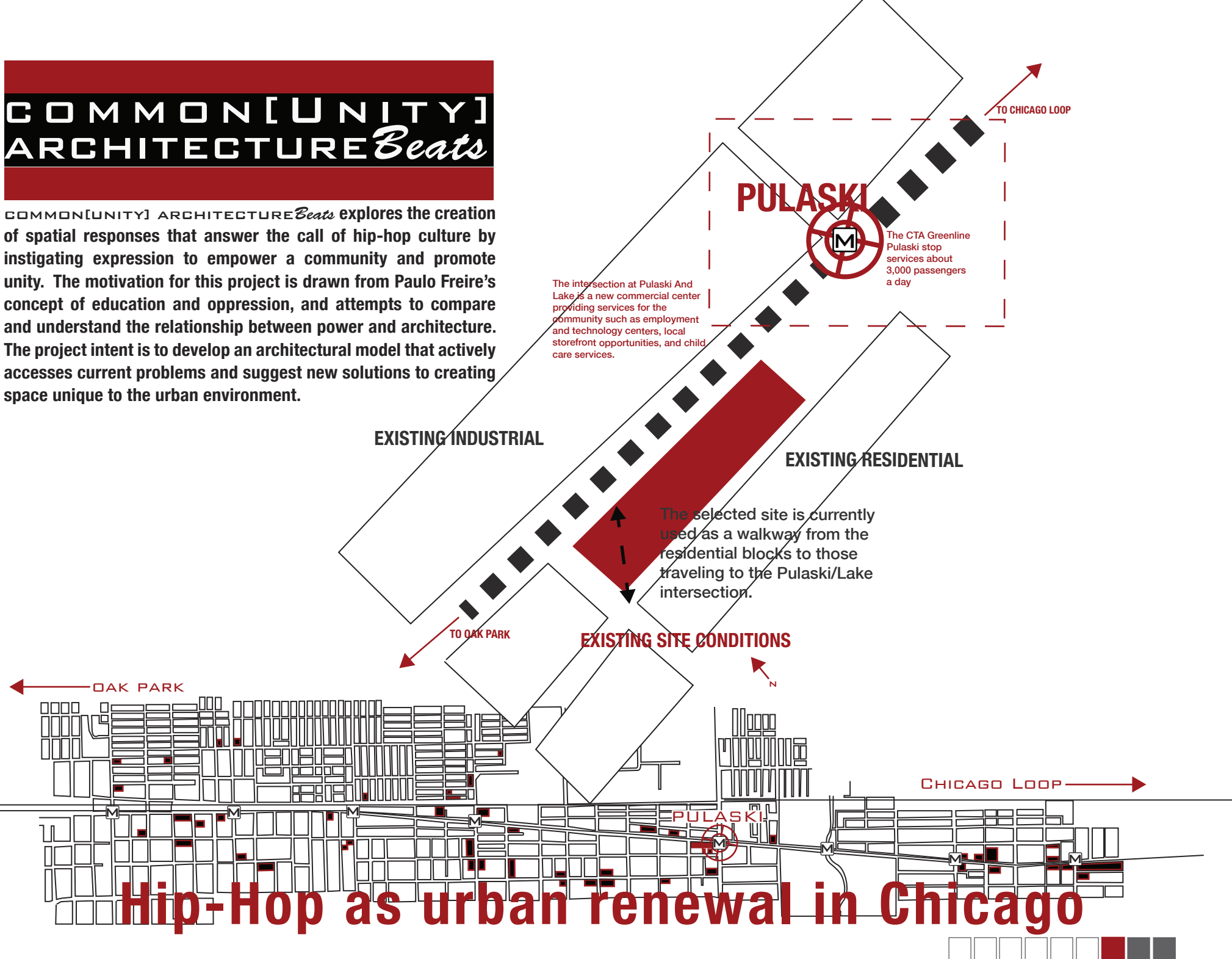
 **Habitat for Humanity®**
of Charlotte

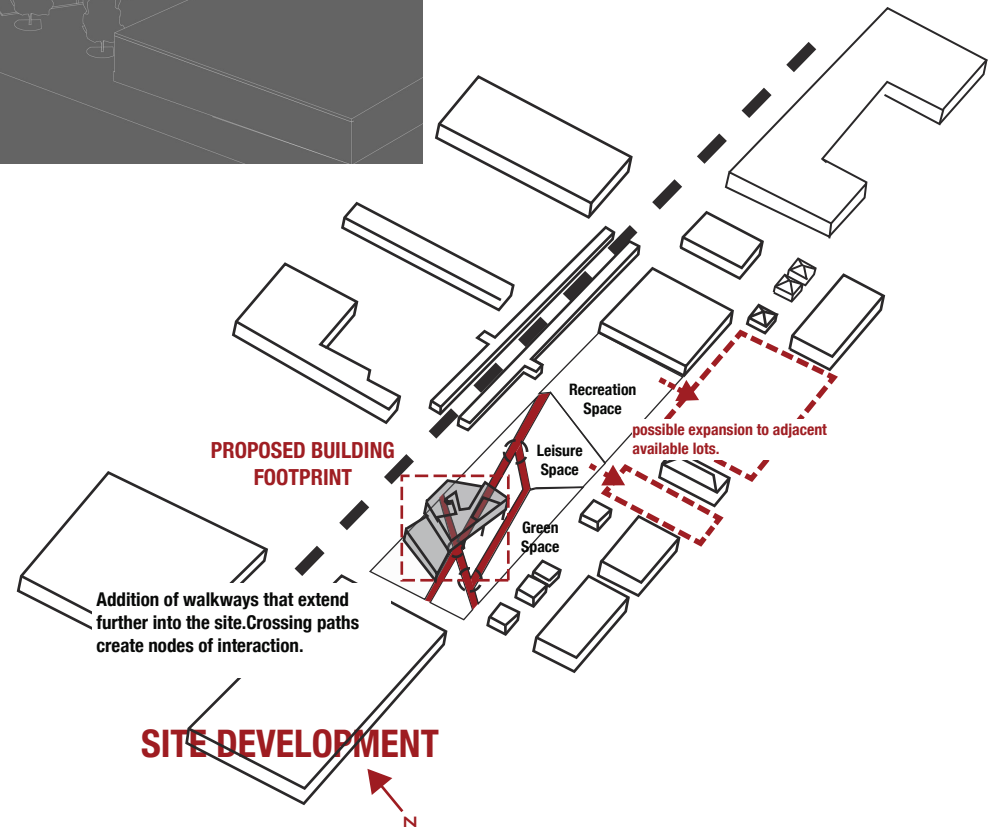
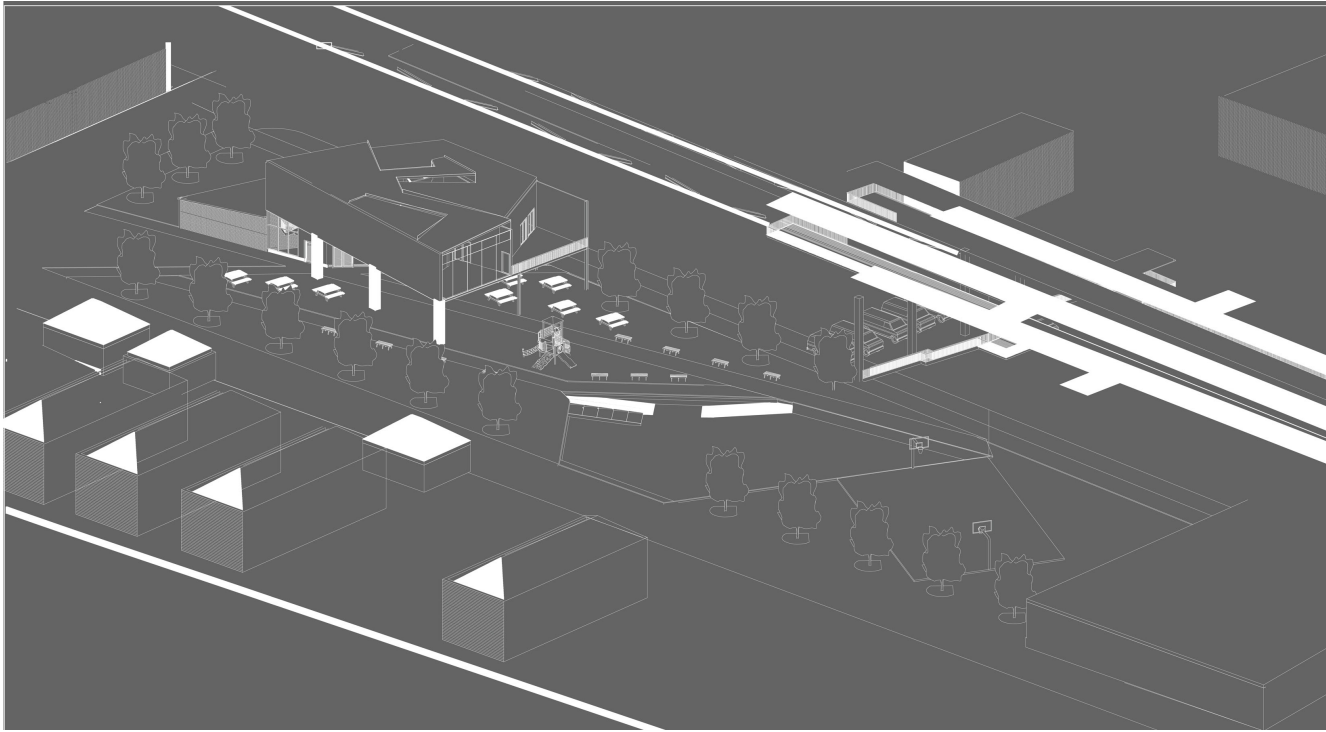
Neighborhood Revitalization Initiative

3400 HOURS OF SERVICE IN 2 YEARS

COMMON[UNITY]
ARCHITECTURE *Beats*

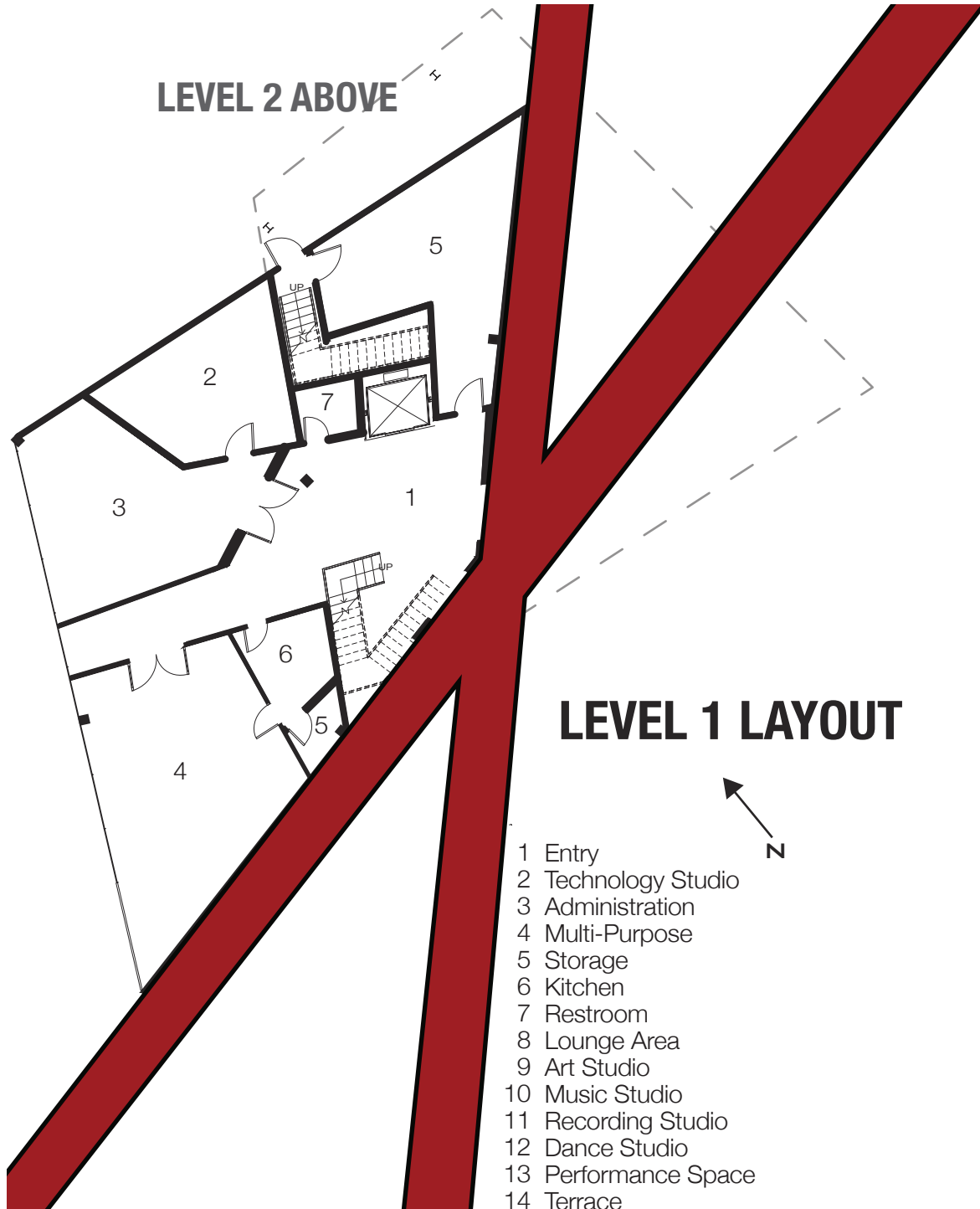
COMMON[UNITY] ARCHITECTURE *Beats* explores the creation of spatial responses that answer the call of hip-hop culture by instigating expression to empower a community and promote unity. The motivation for this project is drawn from Paulo Freire's concept of education and oppression, and attempts to compare and understand the relationship between power and architecture. The project intent is to develop an architectural model that actively accesses current problems and suggest new solutions to creating space unique to the urban environment.





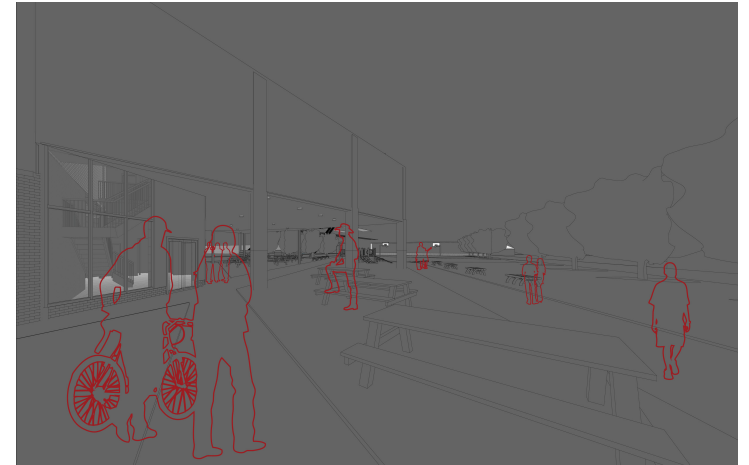
This projects explores the possibility of linking various available sites, throughout the West Side of Chicago, to create a network of opportunities for the residents to collaborate, express and share. These actions are exchanged through arts and recreation, and inspired by hip-hop culture. Sampling from the principles of hip-hop, these new spaces work to empower the community to speak out against and overcome prejudice and injustice. Ultimately leading to unity in the community.

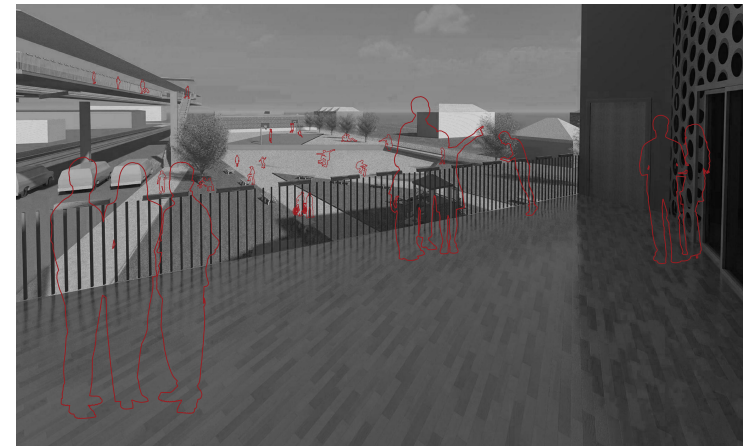
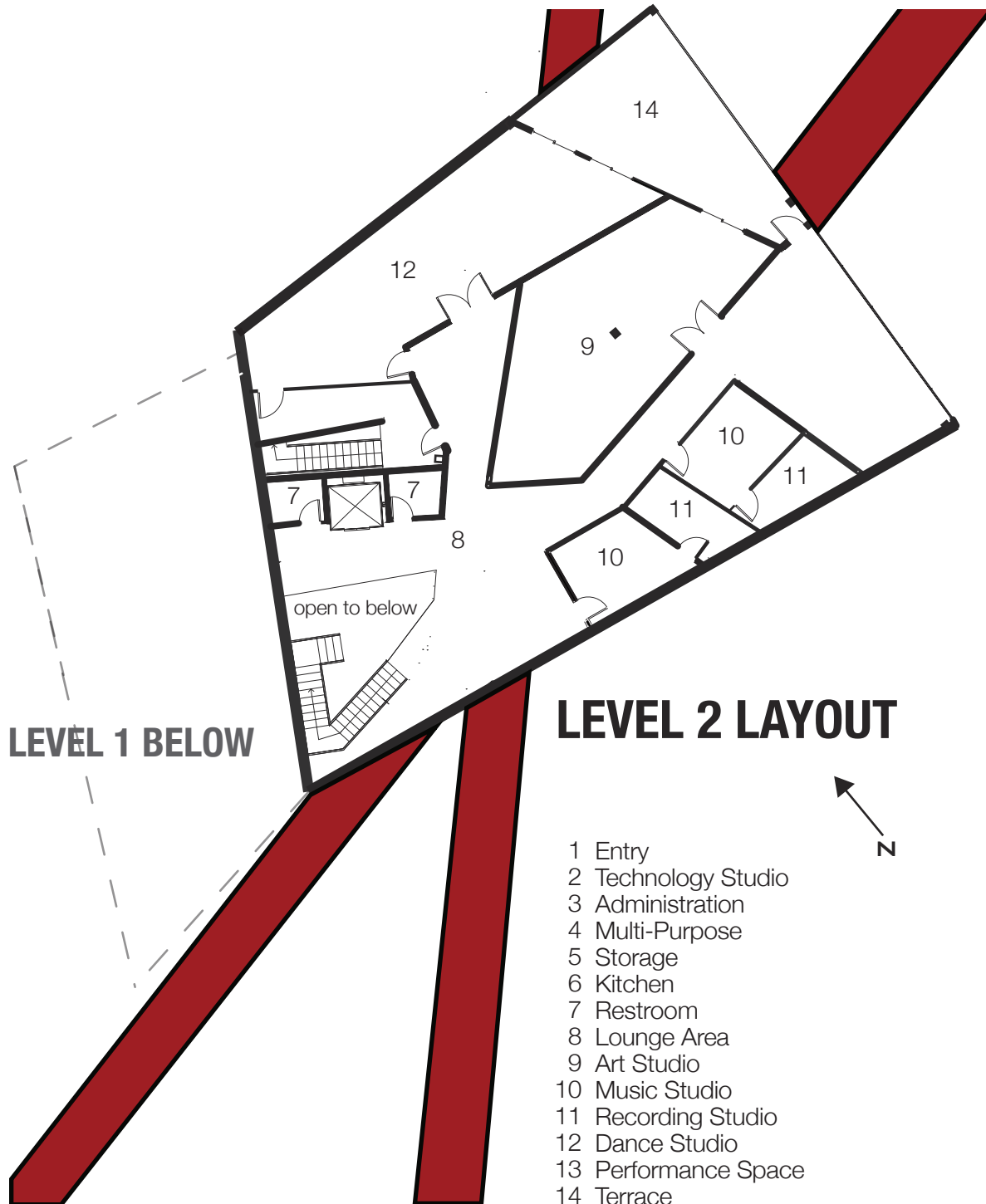
LEVEL 2 ABOVE



LEVEL 1 LAYOUT

- 1 Entry
- 2 Technology Studio
- 3 Administration
- 4 Multi-Purpose
- 5 Storage
- 6 Kitchen
- 7 Restroom
- 8 Lounge Area
- 9 Art Studio
- 10 Music Studio
- 11 Recording Studio
- 12 Dance Studio
- 13 Performance Space
- 14 Terrace





SUSTAINABLE STRIDES

AN URBAN GARDEN PROJECT

Sustainable Strides choreographs a transition from the illusion of food stability to a representation of self-sufficiency through learning, growing and sharing

ILLUSION

“THAT WHICH APPEARS IS GOOD,”

“THE DESIGN”

“THAT WHICH IS GOOD APPEARS”

GUY DEBORD

TEACHING

SYMBOLIC MODELING

REPRESENTATION

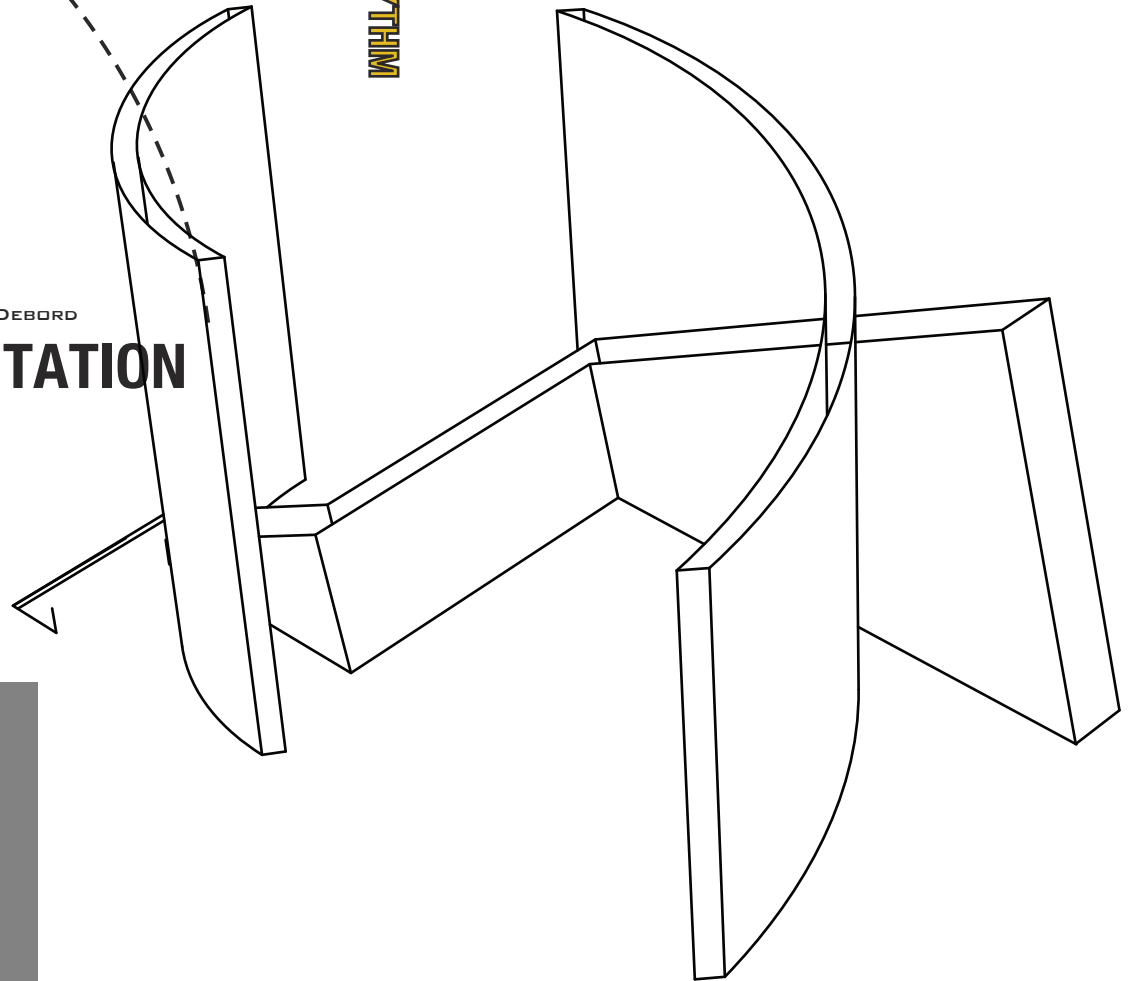
CHANGE

MOVEMENT

FLEXIBILITY

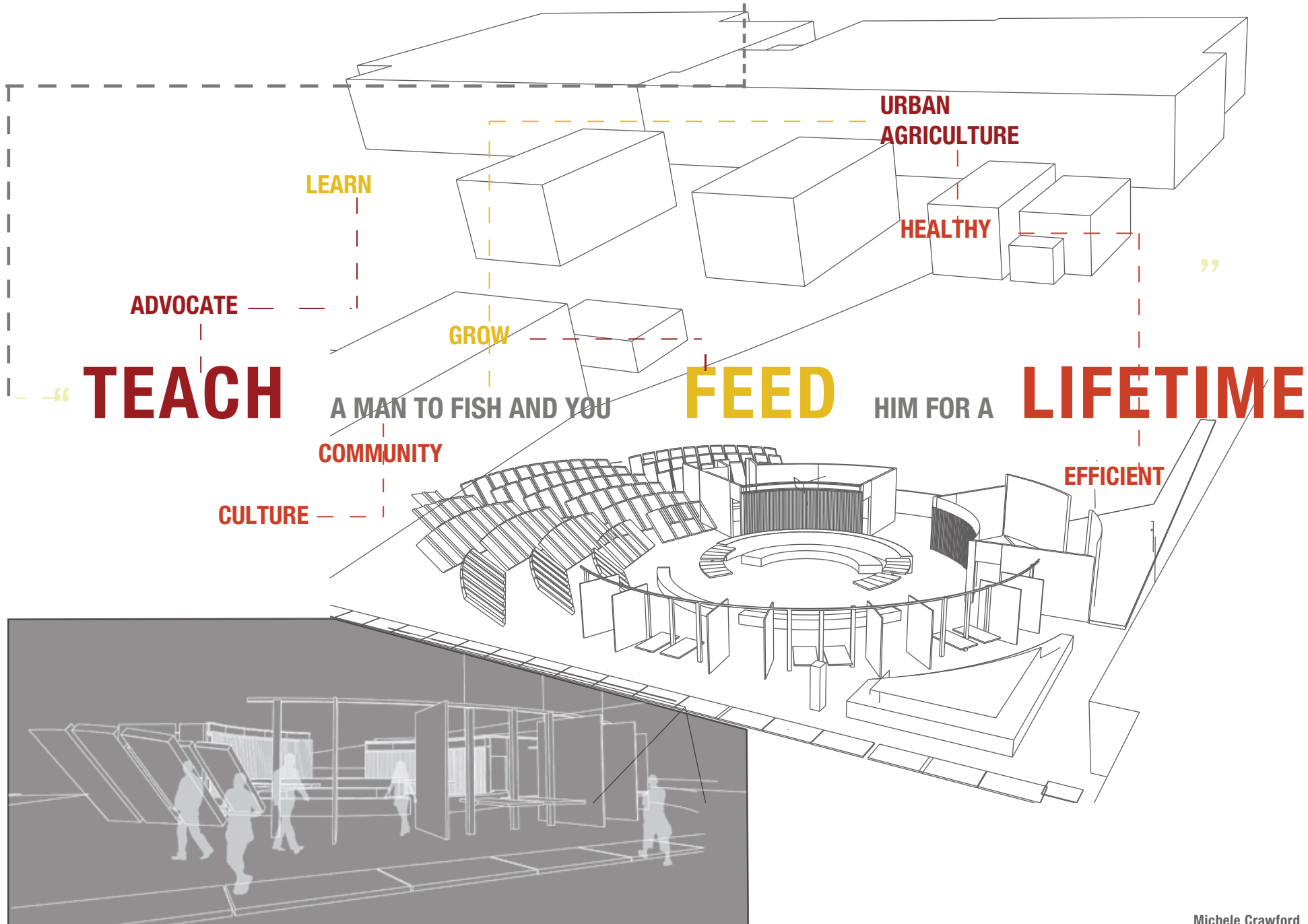
RHYTHM

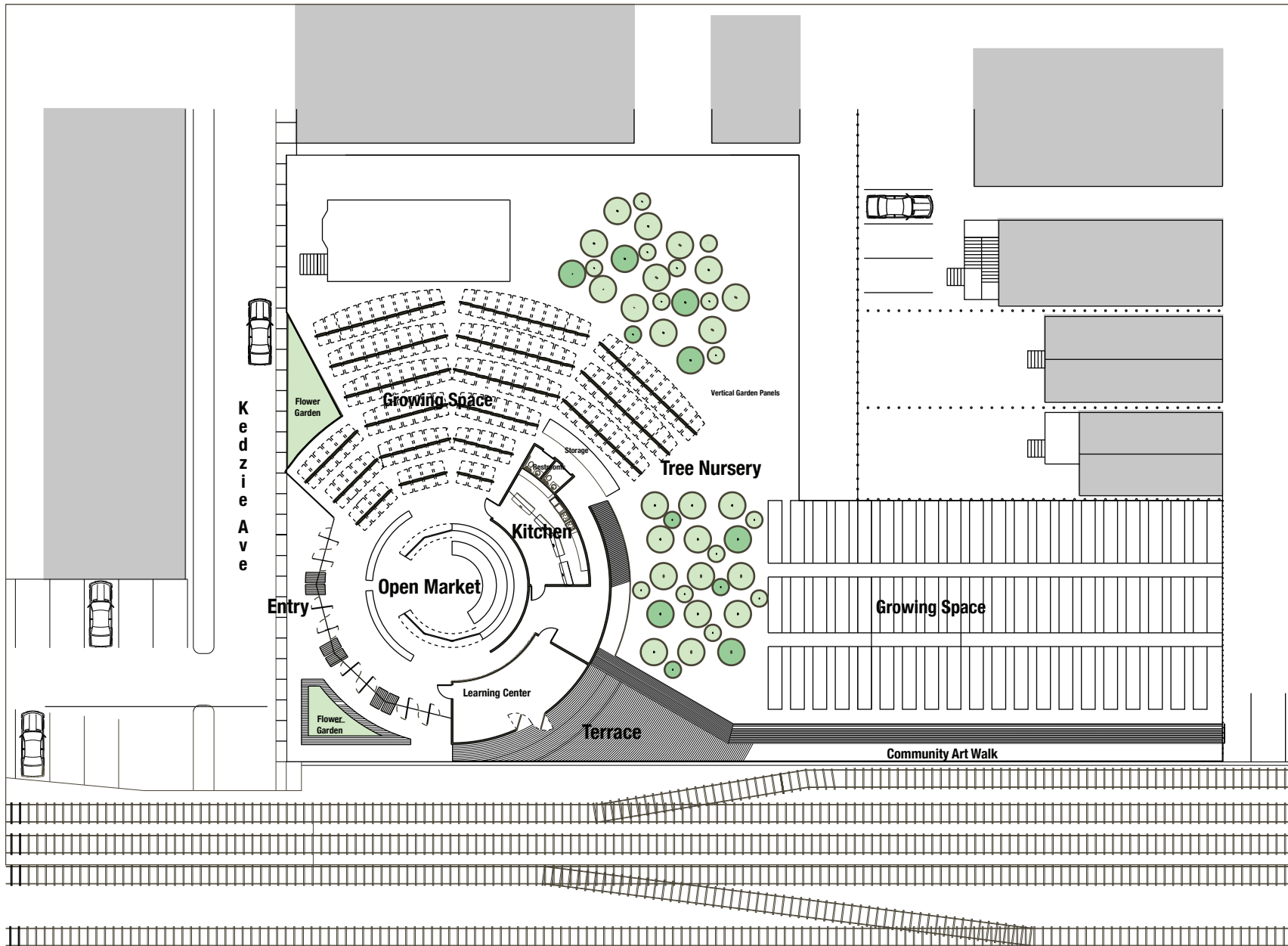
Attention
Retention
Reproduction
Motivation



Through working with the neighborhood, vacant spaces can be transformed from an illusion of what could be to a representation of neighborhood character, fulfilling goals, uniting people and creating spaces. The designed spaces act as the mediation of activities, supporting and enhancing productivity and growth.

“GIVE A MAN A FISH AND YOU **FEED** HIM FOR A DAY;—





GARDEN LAYOUT

